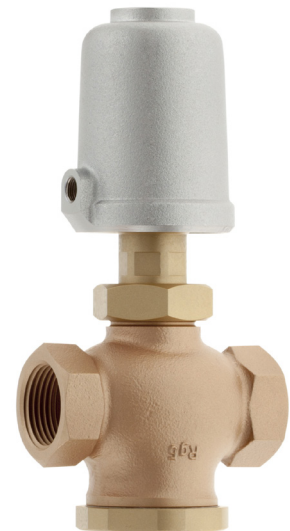


3/2-Way Valve 7080

DN 15 up to DN 40

**Pneumatically operated 3/2-way valve for the control of neutral and slightly aggressive media.
(Stainless steel version, Data sheet Type 7081)**

- Compact design
- Unaffected by lightly contaminated media
- For temperatures from -40°C up to +200°C
- Working pressure up to 16 bar
- Versatile actuators in different sizes



Technical Information

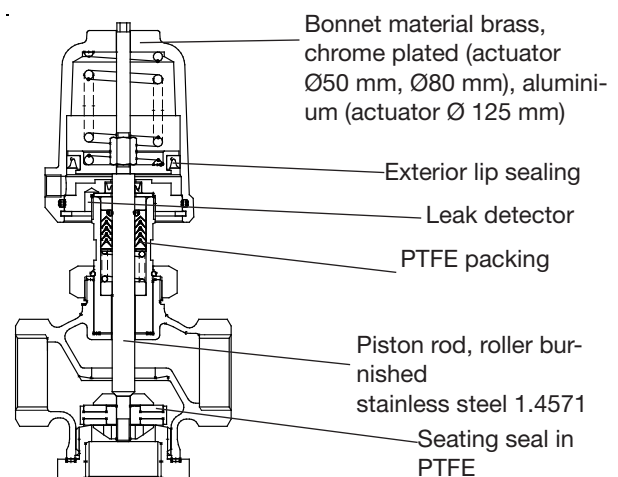
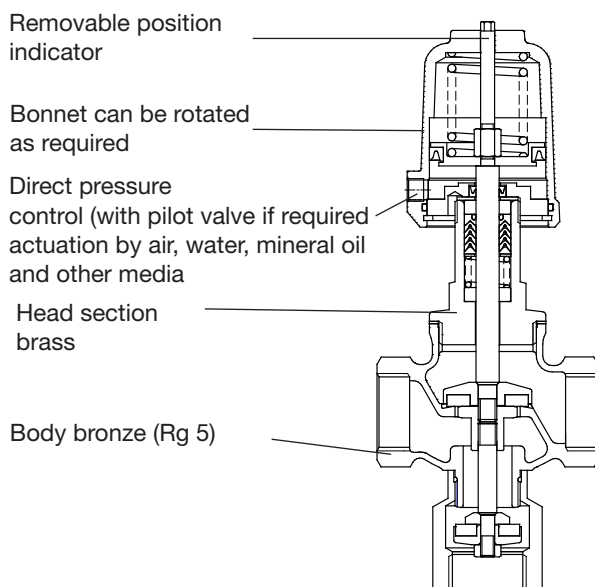
Body material	bronze Rg5
Nominal sizes	DN 15 to DN 40
Connections	Pipe thread acc. ISO 7/1 (DIN EN 10226-1) Rp 1/2" - 1 1/2" NPT thread 1/2" - 1 1/2"
Nominal pressure	PN 16
Max. fluid temperature:	
with metal bonnet	-30°C up to +170°C, opt. -40°C up to +200°C
with plastic bonnet	-30°C up to 135°C
Ambient temperature*	-15°C up to +60°C (sepcial versions from -40°C up to +100°C)
Viscosity of the media	maximum 600 mm ² /s (600cSt, 80°E)
Leakage acc. EN 12266-1	leakage class A
Packing leakage	tested according to TA-Luft as defined in DIN EN ISO 15848-1 and VDI 2440
*: Please consider further temperature versions and limits in technical bulletin 32	

Options

- limit switches
 - inductive proximity switch
 - electrical switch
 - pneumatic switch
- pilot valves
- additional manual operation
- version free of oil and grease

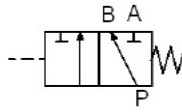
**normal function,
normally closed**

**distributing, mixing function and
shut - off function**

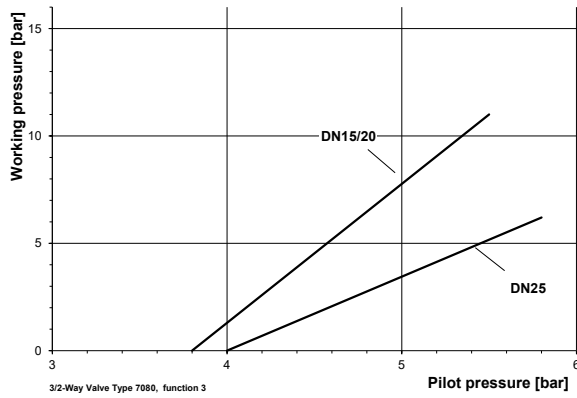


3/2-Way Valve 7080

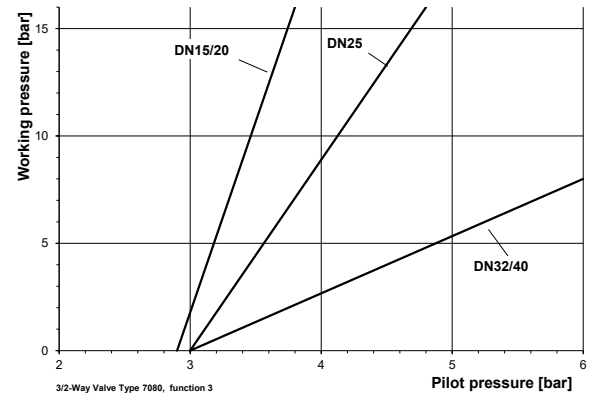
3/2-Way Valve, Distributing function (3)



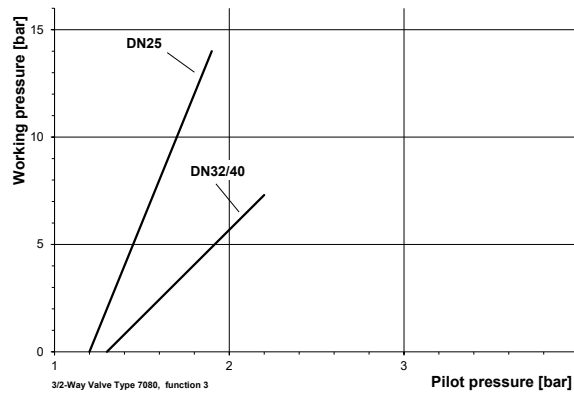
Actuator diameter 50 mm



Actuator diameter 80 mm



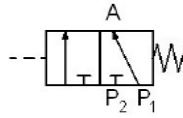
Actuator diameter 125 mm



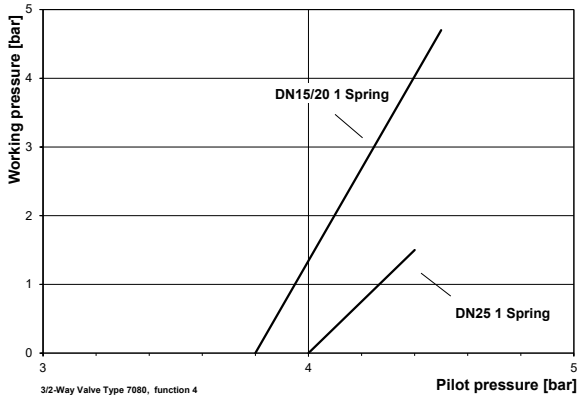
max. adm. pilot pressure

Nominal size DN	Actuator \varnothing mm	Springs	max. Pilot pressure (bar)
15/20	50	1	9
15/20	80	1	7
25	50	1	9
25	80	1	7
25	125	1	2,8
32/40	80	1	7
32/40	125	1	3

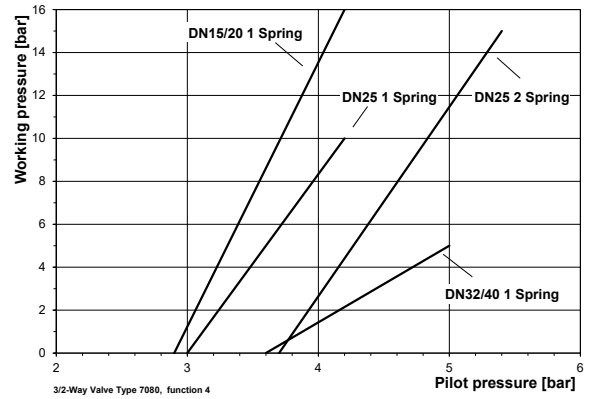
3/2-Way Valve, Mixing function (4)



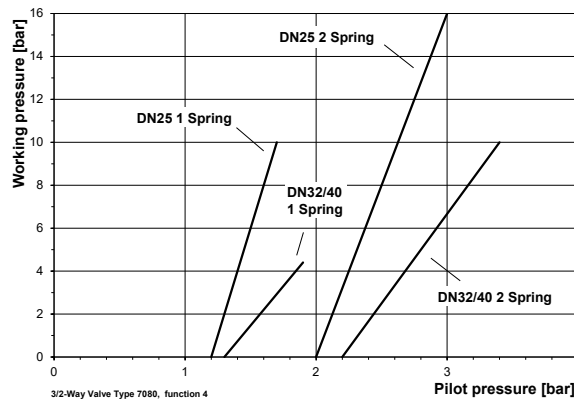
Actuator diameter 50 mm



Actuator diameter 80 mm



Actuator diameter 125 mm



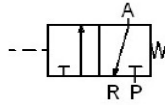
max. adm. pilot pressure

Nominal size DN	Actuator Ø mm	Springs *	max. Pilot pressure (bar)
15/20	50	1	9,8
15/20	80	1	7,2
25	50	1	9,8
25	80	1	7,2
25	80	2	7,9
25	125	1	2,8
25	125	2	3,6
32/40	80	1	7,7
32/40	125	1	3
32/40	125	2	3,9

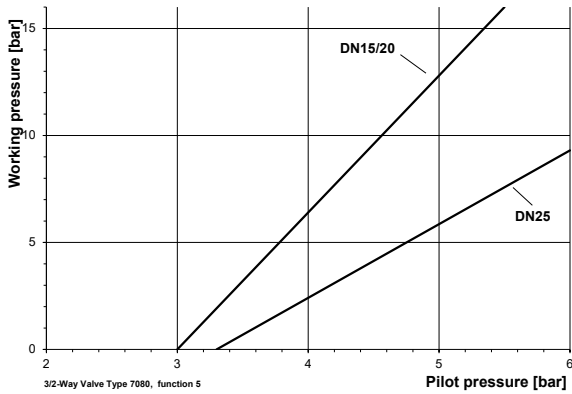
* standard spring configuration
1 spring

3/2-Way Valve 7080

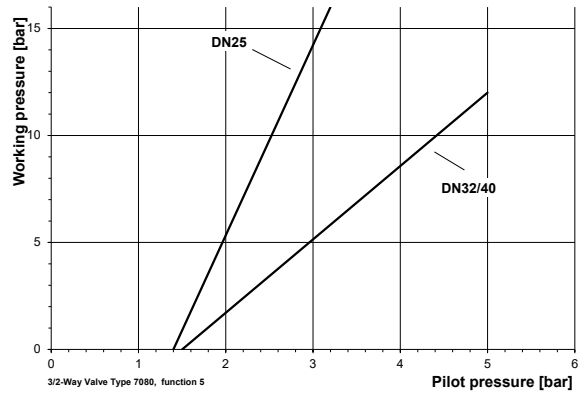
3/2-Way Valve, actuator: normally closed (5)



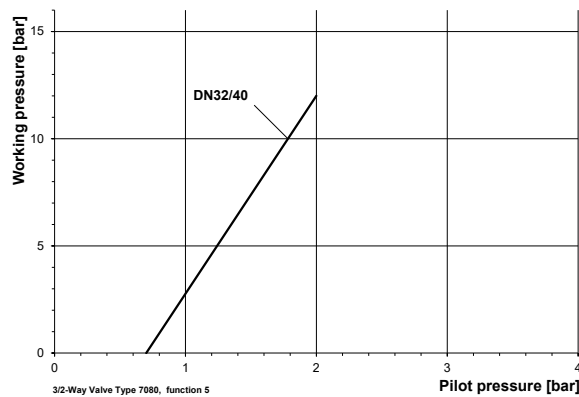
Actuator diameter 50 mm



Actuator diameter 80 mm



Actuator diameter 125 mm

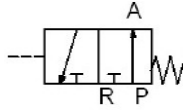


max. adm. pilot pressure

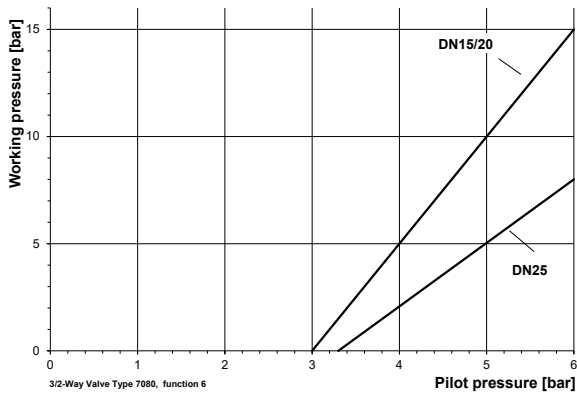
Nominal size DN	Actuator Ø mm	max. Pilot pressure (bar)
15/20	50	9
25	50	9
25	80	5,6
32/40	80	5,5
32/40	125	2

3/2-Way Valve 7080

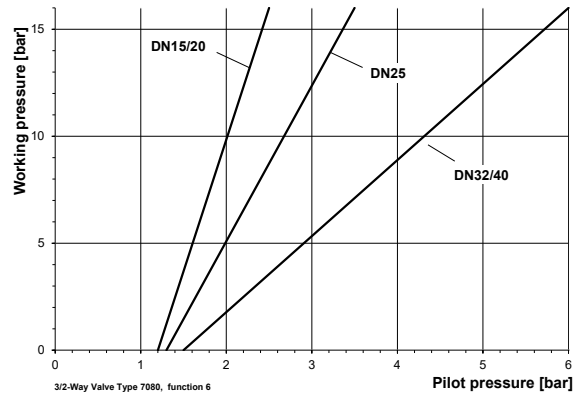
3/2-Way Valve, actuator: normally open (6)



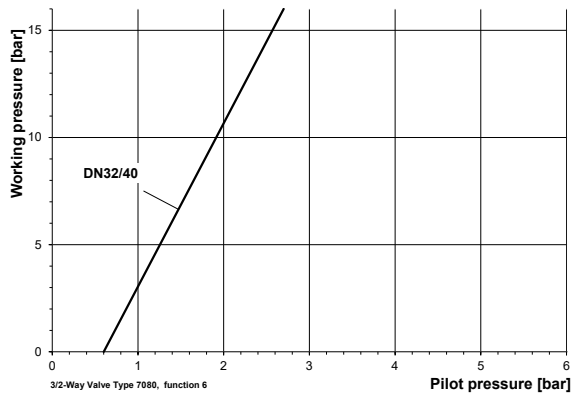
Actuator diameter 50 mm



Actuator diameter 80 mm



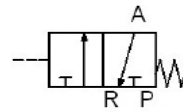
Actuator diameter 125 mm



max. adm. pilot pressure

Nominal size DN	Actuator Ø mm	max. Pilot pressure (bar)
15/20	50	9
15/20	80	5
25	50	9
25	80	6,4
25	125	2,6
32	125	3,8

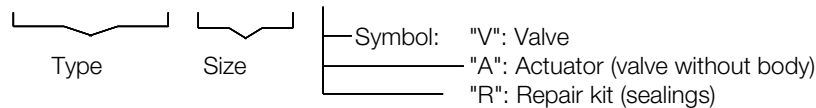
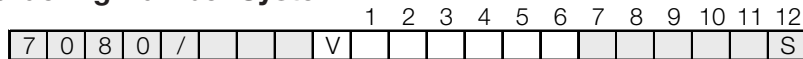
3/2-Way Valve, actuator: shut-off function (7)



Nominal Size DN	Diff. Pressure max (bar)	Pilot pressure (bar)	Actuator Ø mm	Springs *
DN15/20	4,5	3,8 - 9,7	D50	1
DN15/20	9	4,8 - 10	D50	2
DN25	3,5	4,9 - 10	D50	2
DN15/20	16	2,9 - 7,2	D80	1
DN25	10	3,2 - 7,4	D80	1
DN25	16	4,4 - 8,7	D80	3
DN32/40	7	4,4 - 8,5	D80	2
DN32/40	9	5,4 - 9,5	D80	3
DN32/40	4	1,5 - 3,0	D125	1
DN32/40	10	2,2 - 3,9	D125	2
DN32/40	14	3,0 - 4,6	D125	3

*: standard

Ordering Number System

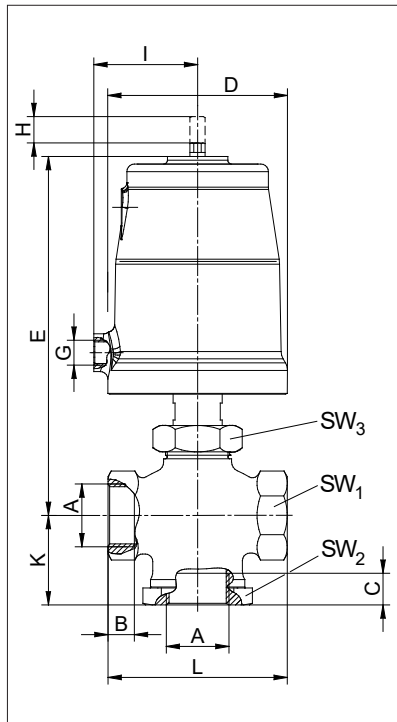


1 - 6 : Please quote all 6 sections.
7 - 12: Quote only if required.

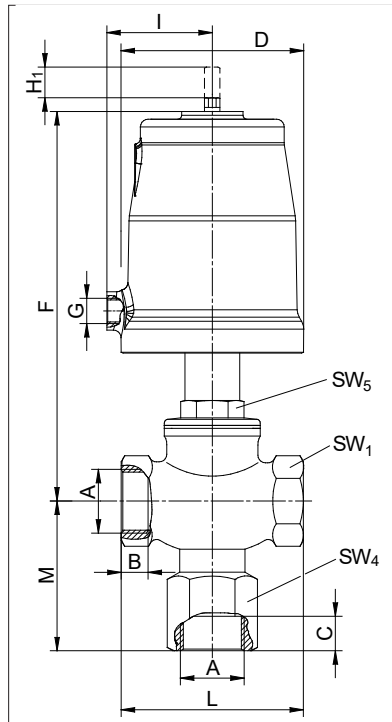
1. Body type	2. Connection	3. Body material	4. Seating seal	5. Pilot function	6. Actuator
3 3/2-way, diver- ting	0 BSP-thread acc. ISO 228-1	1 Bronze Rg5	0 PTFE	0 spring closes (function 3/4/5/7 only)	0 piston Ø50mm 1 piston Ø80mm 2 piston Ø125mm
4 3/2-way, mixing	5 NPT-thread (1/2" up to 1 1/2")			1 spring opens (function 6 only)	
5 3/2-way, spring closes				3 double acting	
6 3/2-way, spring opens					
7 3/2-way, shut- off function NC					
7. Springs	8.	9. Packing	10. Temperature version	11. Accessories	12. Special versions
- standard 1 1 spring 2 2 springs 3 3 springs	- without significance	- standard 2 packing underneath	- standard H high tem- perature version	- no accessories 1 electrical position indi- cator with one switch 2 electrical position indicator with two switches 3 manual emergency operation 4 additional manual operation 5 stroke limitation 6 pilot valve DN 2, 230 V AC 7 pilot valve DN 2, 24 V DC K electr. position indica- tor compact M position indicator with two ind. switch 10 - 36 V DC (PNP) P position indicator with one ind. switch 10 - 36 V DC (PNP) T position indicator compact, inductive 10 - 30 V DC (PNP)	S special versions M position indica- tor with cable bushing N position indi- cator with plug connection

Ordering example: 7080/050V601011- - - - 7:
3/2-way valve type 7080, normal function, DN 50, pipe thread acc. DIN 2999,
body material bronze (Rg5), PTFE seat material, spring opens, actuator 80 mm,
pilot valve 24 V DC.

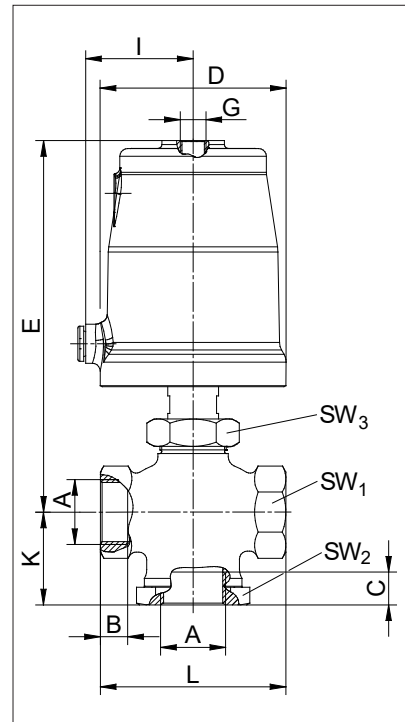
Dimensions and Weights



distributing and mixing function shut - off function (7)



normal function, normally closed

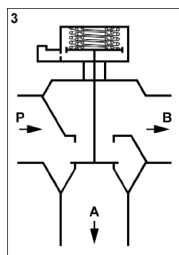


normal function, normally open

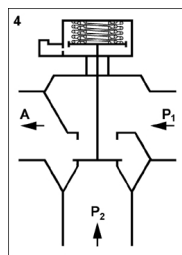
Size	piston	A	B	C	C	D	E	F	G	H	H1	I	K	L	M	SW1	SW2	SW3	SW4	SW5	Kvs value	Weight kg
				G	NPT					stroke	stroke											
15	50	Rp1/2"	13	13,2	15	62	152	147	G 1/8"	9	5	34,5	39	80	68	33	41	41	36	30	5,3	1,5
15	80	Rp1/2"	13	13,2	15	98	191	186	G 1/4"	9	5	55	39	80	68	33	41	41	36	30	5,3	3,1
20	50	Rp3/4"	13	16,3	15	62	152	147	G 1/8"	9	5	34,5	42	80	68	33	41	41	36	30	7,3	1,5
20	80	Rp3/4"	13	16,3	15	98	191	186	G 1/4"	9	5	55	42	80	68	33	41	41	36	30	7,3	3,1
25	50	Rp1"	14	16,8	18	62	152	165	G 1/8"	11	8	34,5	47	95	73	41	55	41	41	30	12,3	1,9
25	80	Rp1"	14	16,8	18	98	191	204	G 1/4"	11	8	55	47	95	73	41	55	41	41	30	12,3	3,5
25	125	Rp1"	14	16,8	18	146	215	228	G 1/4"	11	8	80	47	95	73	41	55	41	41	30	12,3	5,6
32	80	Rp1 1/4"	18	19	19	98	208	211	G 1/4"	18,5	9	55	61	132	93	58	75	41	55	32	20	4,8
32	125	Rp1 1/4"	18	19	19	146	232	235	G 1/4"	18,5	9	80	61	132	93	58	75	41	55	32	20	6,7
40	80	Rp1 1/2"	18	19	19	98	208	211	G 1/4"	18,5	9	55	61	132	93	58	75	41	55	32	23	4,8
40	125	Rp1 1/2"	18	19	19	146	232	235	G 1/4"	18,5	9	80	61	132	93	58	75	41	55	32	23	6,7

Dimensions in mm

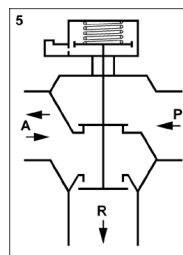
Versions



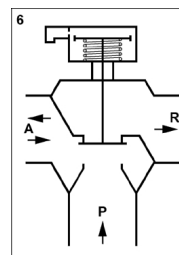
distributing function



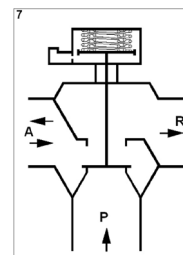
mixing function



actuator NC



actuator NO



shut - off function NC