

Model V

Lube Oil Conditioner

DESIGN AND CONSTRUCTION

PECOFacet Lube Oil Conditioners are built in carbon steel, epoxy painted and designed according to ASME VIII-I.

This equipment is specially designed to remove solids such as dirt, rust, sand and metallic particles wear, as well as lube oily water.

The equipments is made up by a separator filter, a pumping unit and heating unit (optional), all assembled in a skid.

The microfiler separator includes coalescer and separator cartridges with a double objective of retaining the finest particles and removal of water, to ensure a long life and high effectiveness thanks to their specific properties.

CHARACTERISTICS

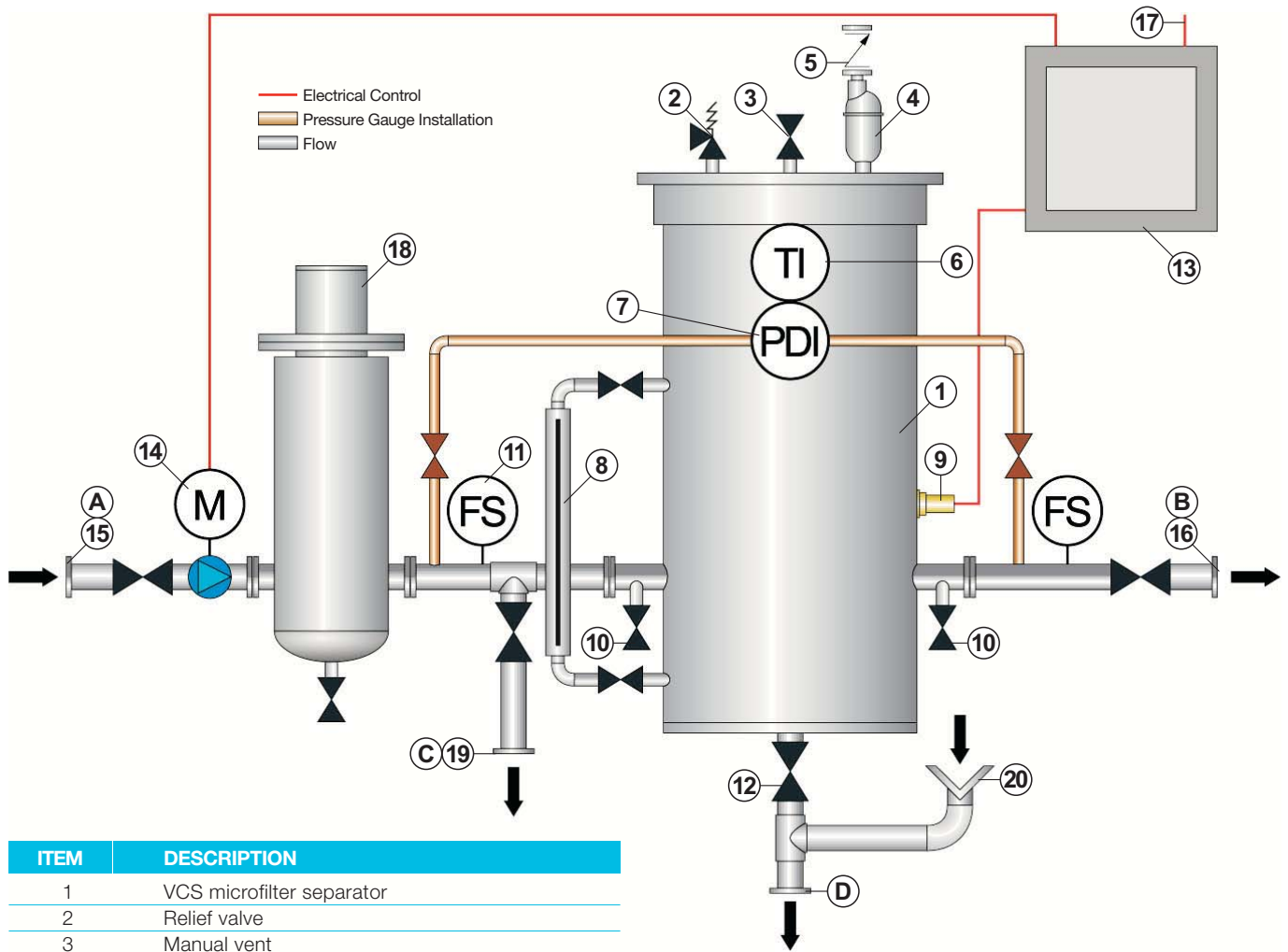
The equipment has the following elements:

- Microfilter separator
- Pumping unit
- Heating (optional)
- Differential pressure gauge
- Level water gauge
- Automatic air eliminator
- Level prove to detect the presence of water
- Control panel

The control panel has the following visual alarms: high level of water in the micrifilter separator, high differential pressure, general failure, high temperature alarm (optional)

RESULTS

- Removes, in continues operation, solids and free water up to concentrations below 20 ppm
- Automatic operation, controlled by a PLC
- No flow inlet adjustment is required
- Its design ensures a safe service and free of leaks or discharges
- Their features make this equipment to have a low maintenance and to be easy to operate
- Each equipment is tested before its shipment to ensure optimum start-up and highest service rates



| ITEM | DESCRIPTION |
|------|-----------------------------------|
| 1 | VCS microfilter separator |
| 2 | Relief valve |
| 3 | Manual vent |
| 4 | Air eliminator |
| 5 | Check valve |
| 6 | Temperature indicator |
| 7 | Differential pressure gauge |
| 8 | Level indicator |
| 9 | Level probe |
| 10 | Inlet/outlet sample probe |
| 11 | Flow switch |
| 12 | Manual drain valve |
| 13 | Control panel |
| 14 | Motor pump |
| 15 | Inlet |
| 16 | Outlet |
| 17 | Electrical line (customer supply) |
| 18 | Heater (optional) |
| 19 | Return to tank line |
| 20 | Drain |

| MODEL | V40 | V70 | V110 |
|----------------------|---------|---------|---------|
| Coalescer cartridge | CA56-3 | CA43-3 | CA43-3 |
| No. of cartridges | 2 | 3 | 4 |
| Recommended spares | 2 | 3 | 4 |
| Separator cartridges | ST640FD | ST636FD | ST636FD |
| No. of cartridges | 1 | 2 | 3 |
| Recommended spares | 1 | 2 | 3 |

| MODEL | DIMENSIONS (mm) | | | FLOW RATE | | CONNECTIONS | | | |
|-------|-----------------|-------|--------|-----------|-----|-------------|------------|--------------------|------------------|
| | length | width | height | gpm | lpm | A (Inlet) | B (Outlet) | C (Return to tank) | D (Manual drain) |
| V40 | 1350 | 950 | 2390 | 10.5 | 40 | DN40 | DN40 | DN40 | DN25 |
| V70 | 1350 | 950 | 2055 | 18.5 | 70 | DN40 | DN40 | DN40 | DN25 |
| V110 | 1550 | 1100 | 2055 | 29 | 110 | DN50 | DN50 | DN50 | DN25 |

© 2009 PECOFacet
 PECOFacet has a policy of continuous product research and development and reserves the right to change design and specifications without notice.